

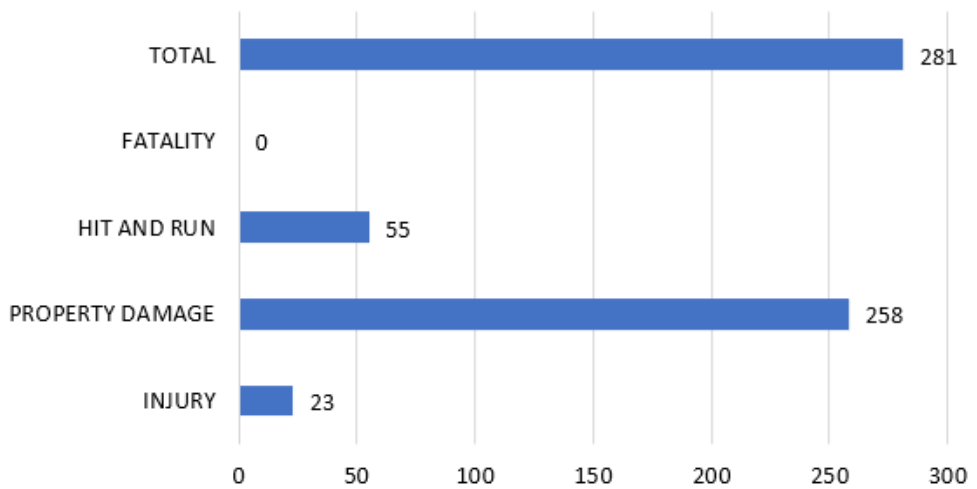


## Traffic Safety Plan

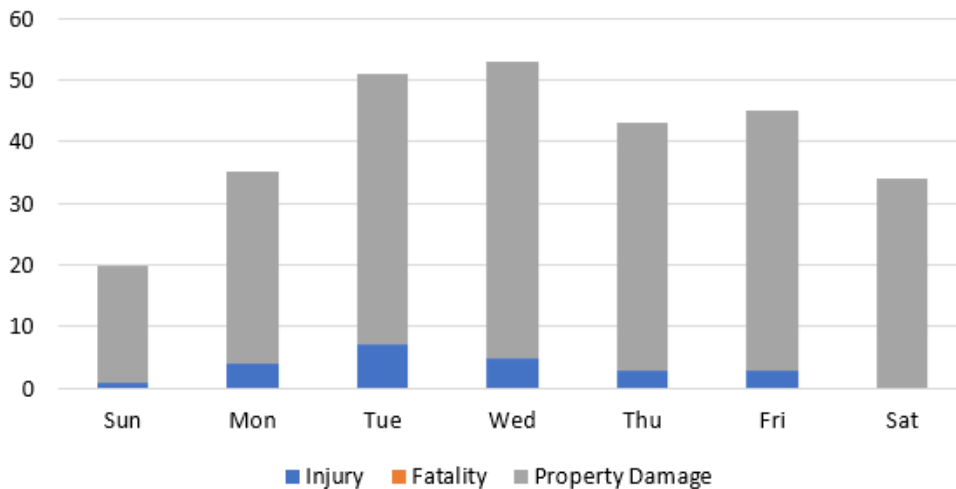
Traffic complaints are the #1 complaint made to the Green Bay Police Department and City Alderpersons. The Police Department is committed to safe travels for motorists, pedestrians and bicyclists. With a goal of reducing traffic crashes, property damage, injury and death on Green Bay’s roadways, the Police department will use a data driven approach for traffic enforcement. Data analytics from crash data, citizens complaints and speed boards will be used to identify traffic emphasis areas. Each month’s report will be posted on the police department’s website and will be presented at each months Traffic, Bicycle and Pedestrians Safety Committee meetings.

### DECEMBER 2021 CRASH DATA

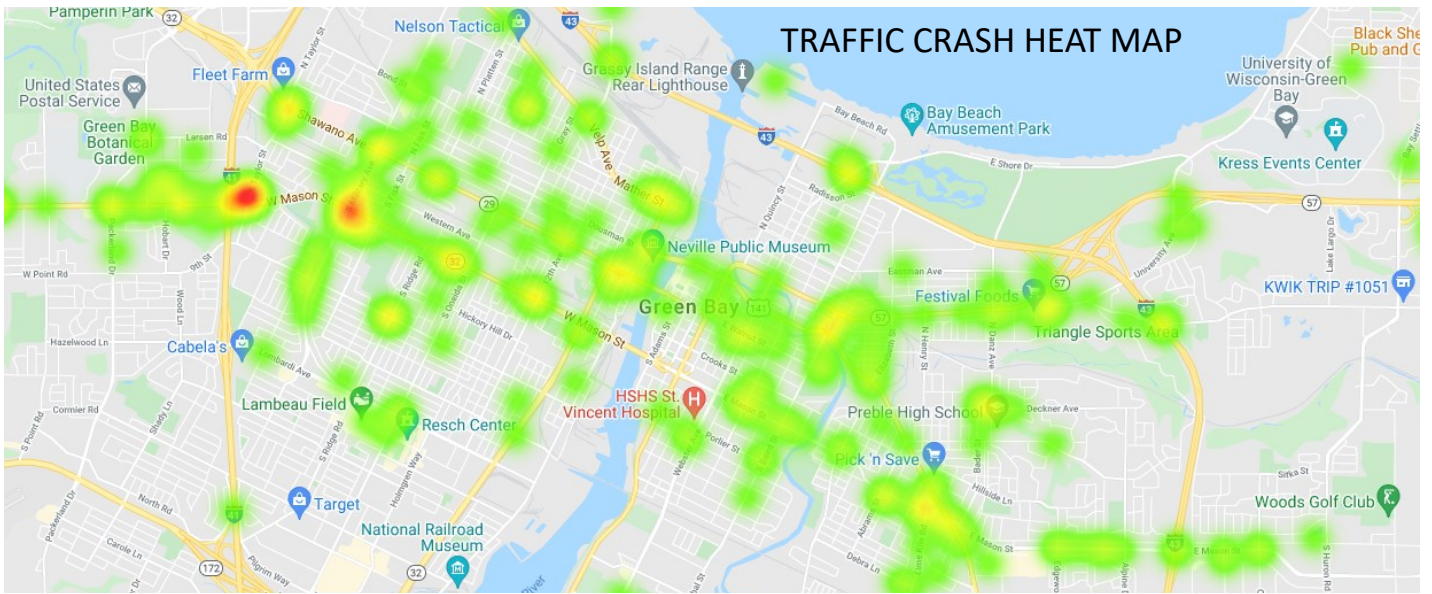
#### TOTAL ACCIDENTS



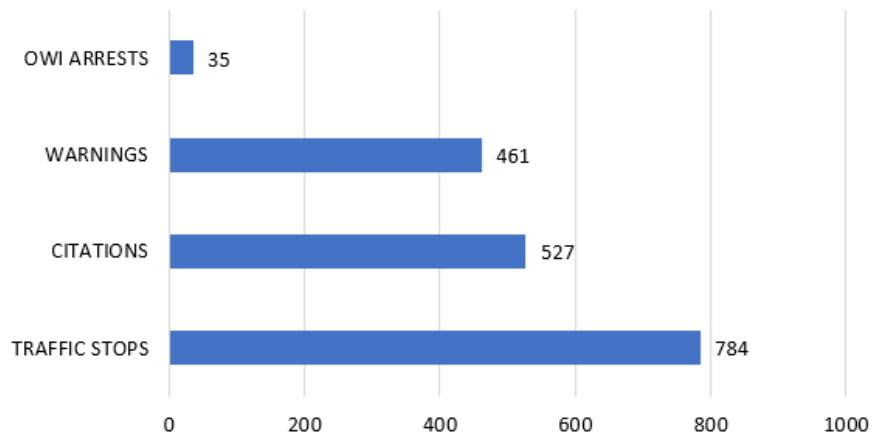
#### Accidents by days of the week



# GREEN BAY POLICE DEPARTMENT TRAFFIC SAFETY PLAN



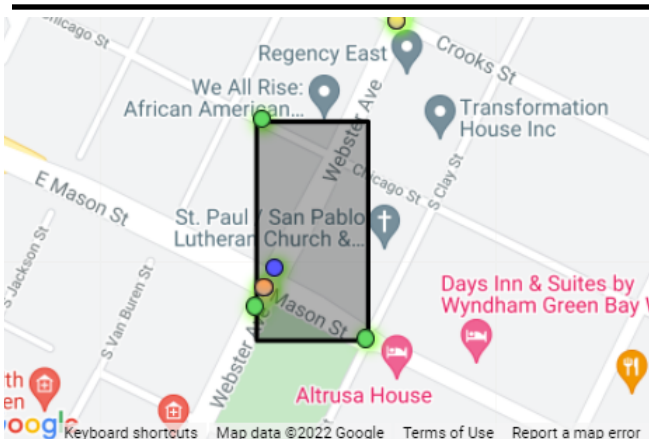
## DECEMBER 2021 TRAFFIC STOPS



## UPCOMING TRAFFIC TASK FORCE DEPLOYMENTS

- \* OWI ENFORCEMENT— JANUARY 7TH, 14TH, 21ST AND 28TH
- \* CLICK IT OR TICKET SEATBELT ENFORCEMENT—JANUARY 11TH AND JANUARY 27TH

## ENFORCEMENT PRIORITY AREAS



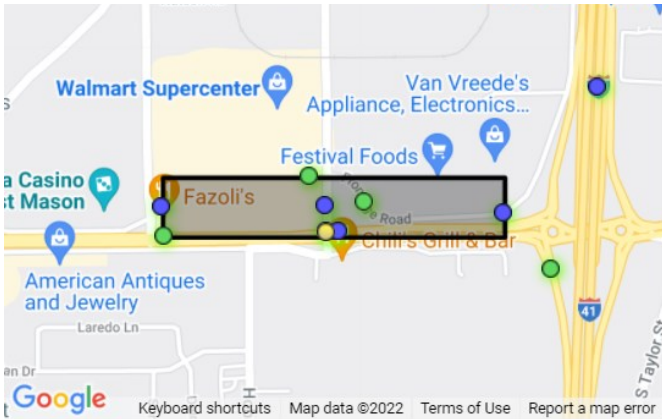
### Analysis Area #1: GREEN BAY (C)

**Total Crashes:** 7

**Contributing Factors:**

- Speed (4)
- Distracted (1)
- Drug (1)
- Teen Driver (1)
- 65+ Driver (1)

# GREEN BAY POLICE DEPARTMENT TRAFFIC SAFETY PLAN



## Analysis Area #2: GREEN BAY (C)

**Total Crashes:** 9

**Contributing Factors:**

- 65+ Driver (6)
- Seat Belt (2)
- Speed (2)
- Teen Driver (2)
- CMV (1)

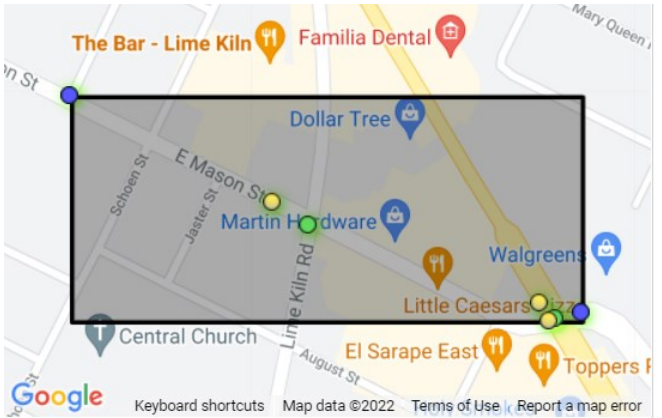


## Analysis Area #3: GREEN BAY (C)

**Total Crashes:** 8

**Contributing Factors:**

- Alcohol (2)
- Speed (2)

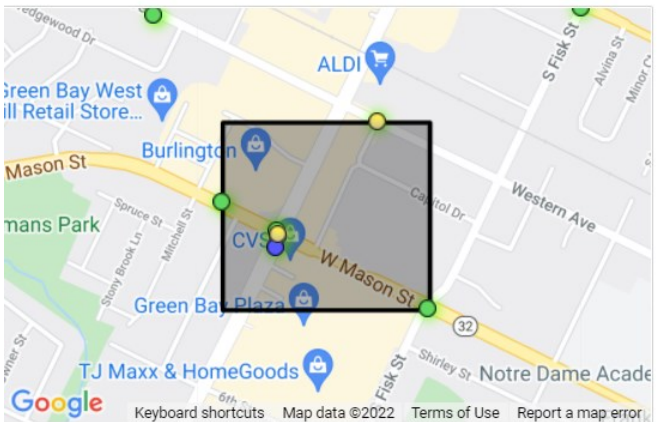


## Analysis Area #4: GREEN BAY (C)

**Total Crashes:** 7

**Contributing Factors:**

- 65+ Driver (3)
- Alcohol (1)
- Distracted (1)
- Teen Driver (1)



## Analysis Area #5: GREEN BAY (C)

**Total Crashes:** 7

**Contributing Factors:**

- Speed (3)
- 65+ Driver (1)
- Seat Belt (2)
- Motorcycle (1)
- Pedestrian (1)
- Teen Driver (1)

# GREEN BAY POLICE DEPARTMENT TRAFFIC SAFETY PLAN

Traffic Complaints

District	Area	Complaint
A	N Platten St/ Minahan St	Speeding cars, all hours of the day
A	N Locust St/Dousman St	Speeding & stop sign violations—all times of the day
A	Southwest High School	Speeding in school zone
A	Taylor St	Vehicles leaving Kwik Trip parking lot are not yielding to right of way
B/C	Tilleman (Mason St) Bridge	Speeding—all times of day
D	3600 Humboldt Rd	Speeding all hours—between Huron Rd/Grandview Rd
D	Finger Rd/Fairway La	Noisy vehicles—weekdays 5:30am-6:00am
D	E Mason/East Town Way	Speeding—all times of the day

## January Traffic Safety Advisory

### Heavy Traffic Routes

As a General rule, Heavy Traffic is prohibited on most residential streets in the City of Green Bay. This is in the interest of traffic safety and maintaining the longevity of our streets.

Green Bay City Ordinance #40-67 defines a Heavy Traffic as any vehicle with a combined weight of vehicle and load in excess of 10,000lbs. This includes private and commercial vehicles.

There are exceptions:

- Government vehicles
- School District vehicles
- Transit buses
- Trucks may travel to locations off the truck route for the purpose of obtaining, moving, or delivering supplies, commodities, or equipment.



However, the truck must travel to the destination using the shortest, most practical route available.

Here is a link to the City of Green Bay Truck Route Map:

<https://greenbaywi.gov/DocumentCenter/View/4940/Truck-Routes>